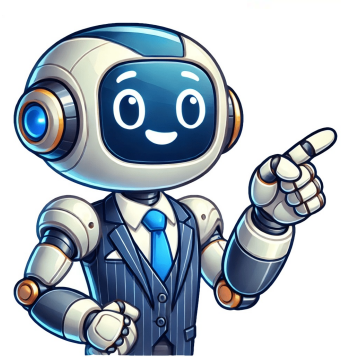


Continue



I have a Kohler Karbon faucet in my kitchen. I love it both for design and functionality, but the water flow started slowing down a few weeks ago. I know there's a way to take the head apart in order to clean the filter inside, but need some detailed explanations on how to do so. Have any of you ever done it? Thank you for your help! Always test your cleaning solution on an inconspicuous area before applying to the entire surface. Wipe surfaces clean and rinse completely with water immediately after applying cleaner. Rinse and dry any overspray that lands on nearby surfaces. Do not allow cleaner to soak. Use a soft, dampened sponge or cloth. Never use an abrasive material such as a brush or scouring pad to clean surfaces. Click here for warranty information. * Success with cleaners and procedures is dependent upon such factors as the hardness and temperature of the water, using exact measurements of ingredients, changes in cleaning formulas and the condition of the product being cleaned. Since there are variations within these factors, Kohler cannot guarantee the effectiveness of the formulas. For best results, keep the following in mind when caring for your KOHLER® product: Always test your cleaning solution on an inconspicuous area before applying to the entire surface. Wipe surfaces clean and rinse completely with water immediately after applying cleaner. Rinse and dry any overspray that lands on nearby surfaces. Do not allow cleaner to soak. Use a soft, dampened sponge or cloth. Never use an abrasive material such as a brush or scouring pad to clean surfaces. Click here for warranty information. * Success with cleaners and procedures is dependent upon such factors as the hardness and temperature of the water, using exact measurements of ingredients, changes in cleaning formulas and the condition of the product being cleaned. Since there are variations within these factors, Kohler cannot guarantee the effectiveness of the formulas. Do not use cleaners containing ammonia, bleach or acid. Rinse thoroughly and use a soft cloth to wipe the product dry after each use. The Oil-Rubbed Bronze finish should be cleaned only with Windex Original. Success with cleaners and procedures is dependent upon such factors as the hardness and temperature of the water, using exact measurements of ingredients, changes in cleaning formulas and the condition of the product being cleaned. Since there are variations within these factors, Kohler cannot guarantee the effectiveness of the formulas mentioned. Care Tip The ideal cleaning technique is to always blot dry any water from metal surfaces. Allowing water to evaporate on metal will form water deposits. It is important to use a dabbing action to dry metal, not an abrasive or rubbing action. Cleaning with a damp sponge and buff drying should keep your product looking beautiful. Rinse thoroughly and use a soft cloth to wipe the product dry after each use. Soft abrasive cleaners may be used when necessary to clean KOHLER® vitreous china products. Strong abrasive cleaners will scratch and dull the surface. Success with cleaners and procedures is dependent upon such factors as the hardness and temperature of the water, using exact measurements of ingredients, changes in cleaning formulas and the condition of the product being cleaned. Since there are variations within these factors, Kohler cannot guarantee the effectiveness of the formulas mentioned. Click here for warranty information or call Toll Free no. 1 800 103 224. * Success with cleaners and procedures is dependent upon such factors as the hardness and temperature of the water, using exact measurements of ingredients, changes in cleaning formulas and the condition of the product being cleaned. Since there are variations within these factors, Kohler cannot guarantee the effectiveness of the formulas. Attempt to Remove by Hand Start by trying to unscrew the aerator from the spout by hand. Most aerators have been threaded on by hand, and often you can unscrew it the same way. Make sure to dry off both the faucet and your hands first in order to get a good grip. Use Pliers If removing by hand does not work, the next step is to try pliers. How do I remove the aerator on a Kohler Artifacts faucet? You can remove it by simply unscrewing it, either with your fingers or by using pliers. Frequent Questions - Water Flows From Showerhead & Tub Spout Simultaneously. Please review the Important Information notes of the installation instructions. ...No Water Output. Rite-Temp valves feature a pressure-balancing unit (PBU). ...Hot Water First. ...Water Temperature Fluctuations. ...Delayed Flow. ...Leak After New Service Kit Installed. ...Springs Fell Out of Cap Assembly. ...Repair. Install a Hose in a Pull-Out Sprayhead Kitchen Faucet. Katun Faucet Stream Breaker Removal. Maxton Faucet Stream Breaker Removal. Remove the Diverter for the Symbol Freestanding Faucet. Removing the Avid™ Single-Control Bonnet and Handle. Replace the Valve in a Two Handle Faucet. Replace Velvet Service Kit Instructions. MaterialMaterialPremium metal construction for durability and reliability. KOHLER finishes resist corrosion and tarnishing. Step by step guide on How to Remove a Bathroom Sink Stopper Try removing the stopper by hand. Some stoppers can be removed by hand without the need for any special tools or techniques. ...Remove items from under the sink. If you can't pull the stopper out, you will need to go underneath the sink to release it - so the next ...Locate the horizontal plunger rod. ...Locate the clip attaching the rod and the strap. ... - Kohler Katun - mod to achieve full water pressure Popular questions on the topic: "how do i remove the filter from kohler bathroom faucet?" How do you remove a bathroom faucet filter? 0:56:24:47 How to Replace a Bathroom Faucet Aerator - YouTubeYouTubeStart of suggested clipEnd of suggested clipAerator. First remove the old aerator in most cases you should be able to unscrew it by hand. If youMoreAerator. First remove the old aerator in most cases you should be able to unscrew it by hand. If you can't you will need to use a wrench to loosen it. www.youtube.com. How do you remove a water restrictor from a Kohler faucet? 0:40:10:06 Kohler faucet flow restrictor removal - YouTubeYouTubeStart of suggested clipEnd of suggested clipYou reach it up in there between the fins you grab it and you yank down. And you usually break aMoreYou reach it up in there between the fins you grab it and you yank down. And you usually break a couple of the fins. www.youtube.com. How do I remove the aerator from my Kohler rectangular faucet? 1:32:9:15 Kohler Katun - mod to achieve full water pressure - YouTubeYouTubeStart of suggested clipEnd of suggested clipYou're gonna need to take it off that's what this screws into to keep hold it on. So go ahead andMoreYou're gonna need to take it off that's what this screws into to keep hold it on. So go ahead and take a flathead screwdriver. And loosen it up and take it off. www.youtube.com. How do you clean a Kohler faucet filter? 1:36:3:04 How to clean your faucet aerator. - YouTubeYouTubeStart of suggested clipEnd of suggested clipTake the aerator. And let it soak in the water or vinegar for a few minutes. Then take theMoreTake the aerator. And let it soak in the water or vinegar for a few minutes. Then take the toothbrush and gently brush the screen. www.youtube.com. How do I remove a faucet filter? 0:26:1:47 How to Unclog a Faucet Aerator For Dummies - YouTubeYouTube www.youtube.com. How do you remove a hidden faucet aerator? 0:012:31 Replacing a Hidden Faucet Aerator - YouTubeYouTube www.youtube.com. How do you remove a hidden aerator without a tool? 0:54:3:05 Remove Water Faucet Hidden Aerator (Delta) - YouTubeYouTube www.youtube.com. How do you remove a Kohler Maxton aerator? To locate the aerator connection, slide a fingernail over the end of the spout. Once the aerator is located, unthread the aerator by hand. support.kohler.com. How do I remove my Kohler aerator without a key? You can remove it in several ways: Put on a rubber glove, put your finger inside the spout and try turning the aerator counterclockwise to unscrew it. Wedge a pair of needle-nose pliers against the sides of the aerator and use the pliers to turn it. www.hunker.com. Do all faucets have removable aerators? Today, faucet aerators are standard components on nearly all kitchen and bathroom sinks. However, you can also purchase separate faucet aerators and install them on faucets that are lacking or have broken aerators. As the faucet aerator usually comes assembled, it only needs to be screwed onto the end of the faucet. www.thespruce.com. Which way do you unscrew a faucet aerator? Turn the aerator counter-clockwise (as viewed upward from below the spout) to unscrew it from the spout. If this does not work, try moving the pliers a quarter-turn around the aerator, and try unscrewing the aerator from the new position. (Moving to different positions can gradually loosen a stubborn aerator.) www.thespruce.com. How do you take apart a Kohler bathroom faucet? 0:27:1:47 Replace Two Handle Ultra Glide Valves - Faucet - YouTubeYouTube www.youtube.com. How do you remove a Kohler flow restrictor? 4:06:10:28 How to Remove Restrictor and Increase Water Pressure - YouTubeYouTube www.youtube.com. How do I remove a hidden aerator without a tool? Some faucet aerators can be removed easily by hand. But there is a type of aerator called a recessed or hidden aerator. ...But if you don't have a key, there are other ways to remove it. Try using your bare hand. ...Use a rubber glove. ...Use your fingernails. ...Use a flathead screwdriver. ...Use vinegar or WD-40. Feb 17, 2022 evolvinghome.co. How do you remove a Kohler aerator? Removing Standard or Cache Aerators You can remove it by simply unscrewing it, either with your fingers or by using pliers. When the aerator is off, you can either clean it in vinegar or replace the screen with a new one. www.hunker.com. How do you take apart a Kohler faucet head? 0:16:2:06 How to fix low pressure in Kohler Simplice faucet - YouTubeYouTube www.youtube.com. How do you remove a Kohler single handle bathroom faucet? Single-Handle Bathroom Sink Faucets - Handle Removal Using a bladed screwdriver, gently pry off the plug button under the handle, taking care to protect all finished surfaces. Using a 1/8" hex wrench, loosen the setscrew securing the handle to the valve stem. Lift off the handle. Unthread the bonnet to expose the valve. support.kohler.com. How do you remove a water flow restrictor? 0:07:1:01 How To Remove a Water Restrictor from a Showerhead - YouTubeYouTube www.youtube.com. Does removing flow restrictor increase pressure? Removing the water restrictor will return your shower pressure to normal, but it may also increase your water bills. homeguides.sfgate.com. How do you open a Kohler aerator? To remove the aerator, line up an adjustable wrench with the flats on the spray face and turn the wrench counterclockwise (Fig. 2). An adjustable wrench is the best tool for the job as other tools will damage the flats on the spray face. support.kohler.com. Cleaning the aerator on a Kohler faucet is an easy process that can help keep your faucet performing optimally. Before you begin, you will need to turn off the water to prevent it from spraying you while you work. Start by unscrewing the aerator from the end of the faucet by turning it counterclockwise. Once it is free, place it aside and take some paper towels or a cloth. Locate the screen at the end of the aerator and wipe it down to remove any visible dirt or debris. You can then place the aerator in a bowl of warm, soapy water and let it soak for about 30 minutes. This will help remove any dirt or buildup that could not be seen with the naked eye. Once it's done soaking, take it out and use a thin brush to further clean the inside and outside of the aerator. If you happen to have a toothpick, use it to remove any stubborn particles. Finally, rinse the aerator with water, give it a final wipe down, and reinstall it by twisting clockwise. Your Kohler faucet should now be free of any clogs or blockages! How do I remove my Kohler aerator without a key? Removing a Kohler aerator without a key is possible, although not recommended as you may damage the parts or finish. Start by locating the aerator on the end of the faucet spout and using needle-nose pliers to turn it counterclockwise. If that doesn't work, you may try pressing the release tab, which is a small button found on the lower side of the aerator. Once you push it with your finger or a pointed object, the aerator should be able to be unscrewed or pulled straight off without a key. If you are still having difficulty, you should try lubricating the aerator with either WD-40 or a plumbing lubricant. Let it sit for a few minutes and then attempt again to unscrew it with needle-nose pliers or by pressing the release tab. If you are still unable to remove it, you may want to consider having a professional plumber do it for you. How do I clean my aerator without removing it? When attempting to clean an aerator without removing it, it is important to be sure to have the correct supplies for the job. You should first use a pair of pliers or other small tools to gently uncap the aerator. After the cap is removed, use an old toothbrush or soft cloth with a small amount of vinegar or soapy water to gently scrub away any debris or buildup. Once the aerator is clean, rinse off the cleaning solution with clean, hot water. Next, use a small wire brush to remove any buildup or rust particles that may have accumulated inside the aerator. Be careful to keep the wire brush from damaging the internal components. If needed, use a small amount of rust-remover to eliminate any remaining buildup. Again, rinse off any remaining rust-remover with clean water. Reassemble the aerator, making sure to wipe off any excess water or debris from the exterior surface. Use a damp cloth to gently re-cap the aerator. Finally, run your taps on the warmest setting to ensure that the aerator is fully flushed and operational. How do you remove a Kohler flow restrictor? Removing a Kohler flow restrictor requires a few simple steps. First, you should identify the location of the flow restrictor. It should be in the showerhead or hand-held wand. Then, you should use a pair of pliers to grip and turn the flow restrictor counterclockwise or use an adjustable wrench to remove the flow restrictor. After that, insert the protective cap in the showerhead to keep the internal parts from getting exposed to water and debris. Finally, replace the flow restrictor with a new one, making sure that it is the same type and size as the old one. Follow the same steps to install the new flow restrictor and check if it is working properly before you finish up. Why does my Kohler faucet have low pressure? Low water pressure in a Kohler faucet can likely be addressed fairly easily. Before calling a plumber or professional. The first and simplest thing to check is if the water shutoff valves underneath the sink are fully open. If they are not, then opening them fully should solve the issue. If this does not solve the problem, then there are several other components that could be causing low pressure. Start by removing the aerator from the end of the spout and cleaning it with a soft brush or cloth. Make sure to use only mild soap to avoid damage to the components. If a clog is present, this could be the cause of the low pressure. If necessary, use a simple homemade vinegar solution to dissolve calcium deposits or other stubborn buildup. In the event that the aerator is not the problem, then you may need to look into the line itself. It is possible there is some obstruction to the water flow within the line itself. This could be due to a collapsed line, blockages such as tree roots, or even corrosion. If the obstruction is not in the line, then it could also be due to a worn-out diverter valve. Once the source of the pressure problem is discovered, you can decide whether to attempt the repair yourself, or to call a licensed plumber. How do I clean my Kohler bathroom sink aerator? Cleaning a Kohler bathroom sink aerator can be a relatively simple task if you have the right tools and a bit of patience. You will need a pair of pliers, a screwdriver (regular or Phillips head will do) and some white vinegar. To begin, unscrew the aerator by turning it left or right depending on the direction your Kohler sink aerator is designed to turn. Once it is off, place it in a bowl filled with your vinegar solution and allow the aerator to soak. This will help loosen any dirt, scale or other debris that might be causing your aerator to become clogged. Next, using your pliers to help, unscrew the part of the aerator that contains the smaller openings. Generally, this is the diffusion cap inside the aerator itself. If you are having trouble unscrewing the cap, you may want to use your screwdriver to help you. Once this part has been removed, you can scrub it with a toothbrush and the vinegar solution until it is clean. If necessary, you can also flush the aerator in cold water. Put all the parts back together, screw the aerator back into the sink, and turn on the water. Your Kohler bathroom sink aerator should now be clean and ready for use.