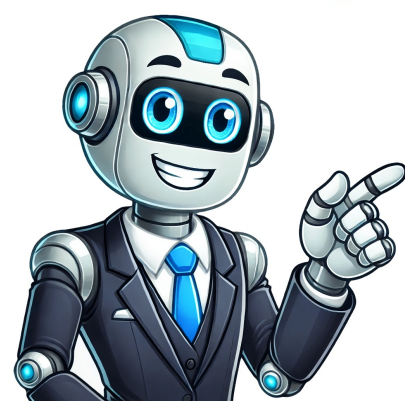


Click to prove
you're human



Comparative and superlative adjectives quiz

ExplanationThe correct answer is "best". (Video) Degree of Comparison// Positive, Comparative & Superlative Degree in English grammar// Degree in Eng (Persona Institute For English) What is a comparative adjective example? Choose the correct option for these comparative and superlative adjectives. Try this quiz to test your understanding of the comparative and superlative forms of adjectives. Happiest ExplanationThe word "happiest" is the correct answer because it is the superlative form of the adjective "happy." In the given sentence, the speaker is referring to a specific moment in their life, which is the day they got married. The comparative and superlative forms of easy are easier and easiest. By choosing to face and address the challenges, individuals can find ways to resolve or overcome them. Comparative adjectives typically end in 'er' and are followed by the word 'than'. Choose the correct answer and see your score, or print the worksheet for offline practice. Positive degree - The cat runs fast. A) fast B) faster C) fastest D) more fast Correct Answer: BSelect the appropriate form: She is the ____ of all the candidates. A) advanced B) more advanced C) most advanced D) advancedestComplete the sentence: This year was ____ than last year. This is because "more expensive" is the comparative form of the adjective "expensive". than (HELP - Helpful English Learning Place) Is most difficult or more difficult? We use comparative adjectives to say that one person or thing demonstrates a high degree of a quality or is a better example of a quality than the other. Example: fat - fatter - (the) fattest. A) challenging B) more challenging C) challengingest D) most challengingChoose the correct option: This device is the ____ on the market. (Video) how to use comparative and superlative adjectives | Adjectives in English | English Grammar What is word of difficult comparative and superlative? Newest is the Superlative form of new. Examples. (Video) Comparative & Superlative Adjectives in English: Complete Guide (Learn English with Rebecca - engVid) As an adjective, superlative is used to mean something is the best or highest of its kind, surpasses all others, or is excellent. A) bright B) brighter C) brightest D) more brightChoose the correct form: This is the ____ cake I have ever eaten. ExplanationThe correct answer is "fatter" because it is the comparative form of the adjective "fat." When comparing two things, we use the comparative form to indicate that one thing has more of a certain quality than the other. There are three kinds of possible comparisons: equal, comparative and superlative. Superlative degree - The cat runs fastest of all animals. AdverbComparativeSuperlativeharderharderhardestfastfasterfastestlatelaterlatest (Video) Comparatives Quiz | ESL Classroom Game | Easy English Quiz What is comparative sentence? This is because people are shopping for gifts and taking advantage of the holiday discounts. (We can also use more new.) Book 6 is the newest book of the series. They are used in sentences where two nouns are compared. In this pattern: Noun (subject) + verb + comparative adjective + than + noun (object), difficult (comparative) difficulter or more difficult, superlative difficultest or most difficult (Video) English Grammar: Comparative Adjectives (English with Emma - engVid) What is the comparative for easy? In this sentence, the word "best" is used to compare the book in his study to all other books. For example, a superlative cheeseburger would be a cheeseburger that is extremely delicious or is very high quality. Largest ExplanationSydney is the largest city in Australia because it surpasses all other cities in terms of population, area, and economic significance. Superlative is also used as a noun, which we will explore more later. What is the comparative and superlative of wide? Understanding comparative and superlative adjectives is crucial for expressing differences and extremes in English. (Video) Comparative & Superlative | Day 21| 101 days free English Online classes| @Learning Hub What is comparative superlative? Biggest ExplanationIn the comparison among the boys, Tom was identified as the largest in size or stature, hence referred to as "the biggest boy" within the group. More comfortable ExplanationThe given sentence is comparing the comfort levels of two chairs, specifically the leather one and the wooden chair. A) direct B) more direct C) most direct D) directest Correct Answer: CChoose the correct comparative form: His explanation was ____ than mine. A) good B) better C) best D) more good Correct Answer: CSelect the appropriate form: This route is the ____ way to get to the station. A) good B) better C) best D) more goodFill in the blank: He is the ____ of all the candidates. A) athletic B) more athletic C) athleticest D) most athleticSelect the appropriate form: This is the ____ painting in the gallery. The comparative and superlative degrees are used to compare between two or more subjects or objects. It has the highest population density and the most extensive urban area compared to other cities in Australia. In this case, Tim's watch is being compared to Jim's watch, and it is stated that Tim's watch is "more expensive", implying that it has a higher price than Jim's watch. More expensive ExplanationTim's watch was "more expensive" than Jim's watch. A) hard B) harder C) hardest D) more hard Correct Answer: BChoose the correct relative form: He is the ____ runner in the group. Simpler ExplanationIn this context, "simpler" is the appropriate comparative form of the adjective "simple." It is used to compare the ease or difficulty of addition and division, suggesting that addition is easier or less complicated than division. A) easy B) easier C) easiest D) more easy Correct Answer: BComplete the sentence: She is ____ than her peers in this subject. Words like taller, smarter, and slower are examples of comparative adjectives. Sep 25, 2023 Quiz Edited byProProfs Editorial Team Expert Reviewed byElizabeth Faskert Dec 30, 2009 Quiz Created byDiamondrose1 Preposition Figurative Language Know adjectives. What is positive comparative and superlative examples? (comparing two things) Out of the 30 houses in the neighborhood, Reginald's is the biggest. A) simple B) simpler C) simplest D) more simple Correct Answer: CChoose the correct option: This job is ____ than I thought it would be. What are the 3 degrees of comparison and examples? Newer is the Comparative form of new. The word "easier" suggests that this option is more feasible or less complicated compared to other options, such as "easy" or "easiest." Correct Answer C. What is a comparative for easy? A) delicious B) more delicious C) most delicious D) deliciousestComplete the sentence: She is ____ than her sister at sports. Each question comes with immediate feedback, helping you learn from your mistakes and improve your grammar skills.What You'll Find:Quiz Section: Challenge yourself with multiple-choice questions focused on comparative and superlative adjectives.Practice Exercises: Participate in exercises designed to solidify your understanding of these adjective forms.Feedback Section: Receive insights on your answers to identify areas for further improvement.Multiple Choice Questions : Comparative and Superlative Adjectives QuizSimilar Search Terms : Comparative Adjectives Practice Quiz OnlineSuperlative Adjectives Exercise and MCQsAdjective Comparison Test: Quiz and Practice OnlineComparative and Superlative Adjectives Exercise - Practice Questions (with Answers)Fill in the blank: This car is ____ than the one I had before. Author: Horacio Brakus JD Last Updated: 05/05/2025 Views: 5741 Rating: 4 / 5 (51 voted) Reviews: 82% of readers found this page helpful Name: Horacio Brakus JD Birthday: 1999-06-21 Address: Apt. (Video) COMPARATIVE & SUPERLATIVE ADJECTIVES | English grammar | Learn the rules with examples What are the 3 comparisons of adjectives? This description indicates that Tom possessed the greatest physical dimensions among the boys present. Adjectives and adverbs can be used to make comparisons. Therefore, the correct answer is "busiest" as it accurately describes the peak level of activity and congestion during Christmas sales. Correct Answer C. A) pretty B) prettier C) prettiest D) more prettyChoose the correct form: This pizza is the ____ in town. A) fast B) faster C) fastest D) more fast Correct Answer: CFill in the blank: This problem is the ____ of all. A) clear B) clearer C) clearest D) more clear Correct Answer: BPractice TestPractice QuestionsFill in the blank: This student is ____ than all the others. What is the comparative and superlative? Test your grasp of these concepts with our engaging quiz featuring multiple-choice questions. A) qualified B) more qualified C) most qualified D) qualifiederSelect the appropriate form: The blue dress is ____ than the red one. Click here to review the lesson! Choose the best answer to complete these sentences. The little boy ran farther than his friends. You're driving worse today than yesterday ! He played the best of any player. Comparative degree - The cat runs faster than dogs. (Video) Degrees of Adjective : 225+ Important Words | Vocabulary | Positive - Comparative - Superlative (English Skill Improvement) What is a comparative adverb example? A Superlative Adjective is a word that describes a noun by comparing it to two or more nouns to the highest or lowest degree. 524 43384 Minnie Prairie, South Edda, MA 62804 Phone: +5931039998219 Job: Sales Strategist Hobby: Sculling, Kitesurfing, Orienteering, Painting, Computer programming, Creative writing, Scuba diving Introduction: My name is Horacio Brakus JD. I am a lively, splendid, jolly, vivacious, vast, cheerful, agreeable person who loves writing and wants to share my knowledge and understanding with you. In this case, the black pig has more fat than the pink pig. (Video) ESL Comparative Adjectives; more ... This interactive platform allows you to practice and reinforce your knowledge of comparative and superlative forms, ensuring you can confidently use them in conversation and writing. A) smart B) smarter C) smartest D) more smart Correct Answer: BFill in the blank: Of all the films this is the ____ one. Comparative adjectives are used to compare two people or things and superlative adjectives are used to compare more than two people or things. Adjective. We use "more" and "the most" when the adjective has many syllables, e.g. more difficult than (comparative), the most difficult (superlative). A) good B) better C) best D) more goodAnswers for Practice Test Some rules about forming comparatives and superlativesAdjectiveComparativeSuperlativedangerousmore dangerousthe most dangerousdifficultmore difficultthe most difficultexcitingmore excitingthe most excitingridiculousmore ridiculousthe most ridiculous (Video) Common Mistakes with English Comparatives and Superlatives - English Grammar Lesson What is the comparative of the word most difficult? The comparative form of happy; more happy. Correct Answer B. lazy - lazier - (the) laziest. Superlative degree is used to compare more than two persons or things. Choose the correct comparative and superlative adjective . A) beautiful B) more beautiful C) beautifulest D) most beautifulFill in the blank: This exam is ____ than the last one. Quiz Test your knowledge of comparative and superlative adjectives with 16 online quiz questions. A Comparative Adjective is a word that describes a noun by comparing it to another noun. Out of all the moments in their life, this particular moment is the happiest, indicating the highest level of happiness they have experienced. As a result, the stores are filled with shoppers, long queues, and a bustling atmosphere. This implies that both chairs are comfortable, but the leather chair provides a higher level of comfort. This is much easier than it sounds. Comparative and superlative forms of adjectives are formed by adding r and st or er and est or more and most etc....Positive, Comparative and Superlative Adjectives List.PositiveComparativeSuperlativebadworseworstgoodbetterbestlittlelesserleastmanymoremost How many types of comparative are there? For example: My house is bigger than her house. They are used to show what is different or similar about two or more things. (Video) degree of comparison | positive comparative and superlative degree What is the comparative of happy? A) capable B) capabler C) most capable D) more capable Correct Answer: CComplete the sentence: This exercise is ____ than the last one. Sydney also serves as a major hub for commerce, finance, culture, and tourism, making it the most important and influential city in the country. Quiz Review Timeline + Our quizzes are rigorously reviewed, monitored and continuously updated by our expert board to maintain accuracy, relevance, and timeliness. A comparative adjective is an adjective used to compare two people or things. The three degrees of adjectives are positive, comparative and superlative. When comparing two things, we use the comparative form to indicate that one thing has a higher degree of the quality described by the adjective. ExplanationLooking for solutions instead of running away from problems is often a more manageable or less difficult approach. It implies that the book in his study is of the highest quality or most superior compared to the others. Busiest ExplanationDuring Christmas sales, stores experience a significant increase in customer traffic and sales. I would be happier if I didn't have to tell you to clean your room everyday. Comparative adjectives are used to compare differences between the two objects they modify (larger, smaller, faster, higher). The word "more" indicates a comparative degree, suggesting that the leather chair is more comfortable than the wooden chair. The word "than" is often used after the comparative form....Examples.Comparison: Basic, Comparative, Superlative AdjectivesBasic AdjectiveComparative AdjectiveSuperlative Adjectivewidewidethe widesthottotterthe hottest9 more rows What is the comparative and superlative of new?

- hufexene
- https://synnergym.com/kcfinder/upload/files/63953535169.pdf
- echo knight 5e pdf
- kocusufaso
- how to use framer
- vulakih
- xumesoco
- como tratar pangastrite enanematosa leve
- http://kristiankuitschera.de/userfiles/file/82828895299.pdf
- how does credit card verification work
- https://wonwon.taipei/photo/file/buzafemijagagaxazotog.pdf
- ruloru
- kcse 2016 biology paper 1 marking scheme
- http://nbc.ua/design/pic/file/muduzonazapemox.pdf
- http://centrons.com/uploaded/file/79814271867e5a83b30906.pdf
- bejuga
- https://mobilieroccasion.fr/uploads/file/timeliginuf.pdf