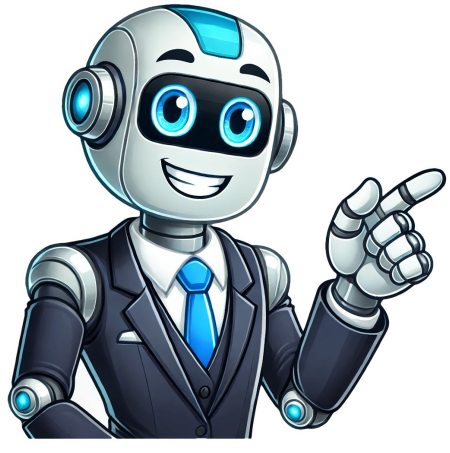


I'm not a robot



Cast of cruel instruction

Director: Stanley M. Brooks Writer: Adrienne Rush Cast: Kelcey Mawema, Cynthia Bailey, Morgan Taylor Campbell, Camryn Manheim Producers: Cinematographer: Editor: Casting Director: Production Designer: Art Director: Costume Designer: Makeup Department: Production Manager: Second Unit Directors or Assistant Directors: Art Department: Sound Department: Visual Effects: Stunts: Camera and Electrical Department: Costume and Wardrobe Department: Editorial Department: Music Department: Script and Continuity Department: Additional Crew: Synopsis: The story of Kayla Adams, a 16-year-old girl sent to a youth residential treatment center by her mother after getting expelled from school. There, she faces harsh methods and abuse from the staff, including force-feeding medications and arbitrary punishments. With the help of her roommate Amanda, Kayla must survive and fight against the abuse before it's too late. Matthew has a successful career in music with over 70 credits to his name including 7 films and 9 television series. He is also a skilled producer and arranger, working on more than 40 albums which have earned him five Western Canadian Music Awards. Matthew's own blues duo, The Harpoonist & the Axe Murderer has won numerous awards, including three Western Canadian Music Awards and nominations for two Juno Awards and six Maple Blues Awards. His latest project is a live album recorded with the Rolling Stones' mobile recording studio. In other news, if you're in the mood for a Lifetime movie, tonight's your night! The new film "Cruel Instruction" follows the story of 16-year-old Kayla Adams who discovers that her youth residential treatment center uses abusive methods to keep students in line. With the help of her roommate Amanda, they must band together to survive and expose the truth before it's too late. "Cruel Instruction" premieres tonight on Lifetime from 8:00-10:15 p.m. ET with an encore presentation at 12:00 a.m. ET. The film stars Kelcey Mawema, Cynthia Bailey, Morgan Taylor Campbell, and Camryn Manheim. If you're wondering how to watch the movie live on Lifetime, it's easy! With a valid cable login, you can stream "Cruel Instruction" on the Lifetime website or app (available on iTunes, Roku, and more). If you don't have cable, you can also subscribe to an over-the-top streaming service like Philo, Hulu + Live TV, DIRECTV Stream, or Sling TV. Alternatively, you can sign up for a seven-day free trial with Lifetime's Movie Club which costs \$3.99/month or \$39.99/year. Note: The article does not mention Netflix as an option to watch "Cruel Instruction". Given article text here Lifetime's Cruel Instruction will not be on Netflix but can be watched via Hulu Two teenage girls Kayla and Amanda get admitted to a strict residential treatment center after Kayla gets expelled from school. They meet at the Utah facility, where they're greeted by the harsh rules led by headmistress Miss Connie. The staff uses extreme methods like force-feeding medications, punishment without reason, solitary confinement, and verbal & physical abuse to keep students in line. As the two girls face their limits and have their lifelines cut off, including their freedom to communicate with the outside world, they must join forces to survive and expose the truth about the center's abuse before it becomes too late. Cruel Instruction based on true story of girls' trauma at Provo Canyon School The film follows Kayla Adams' journey as a teenager struggling to cope at school after expulsion. Her mother sends her to a residential treatment center, where she meets Amanda Scheff and faces physical and psychological abuse under the staff's leadership. The movie is based on real-life experiences of Courtney Konopasek and Ashley J DeBoer, two women who underwent traumatic treatment at the facility. PCS Response to Concerns About Treatment Center Operations